


# HUDSON



## VILLAGE THEATRE

### Technical Information

The Hudson Village Theatre is an intimate proscenium theatre with 148 seats on a rake. Seating is not flexible.

#### STAGE:

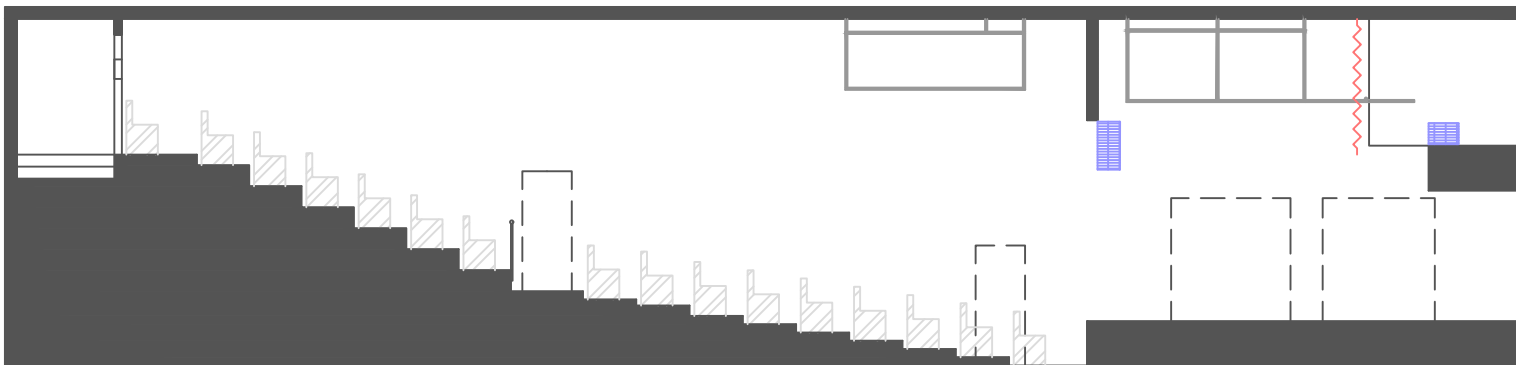
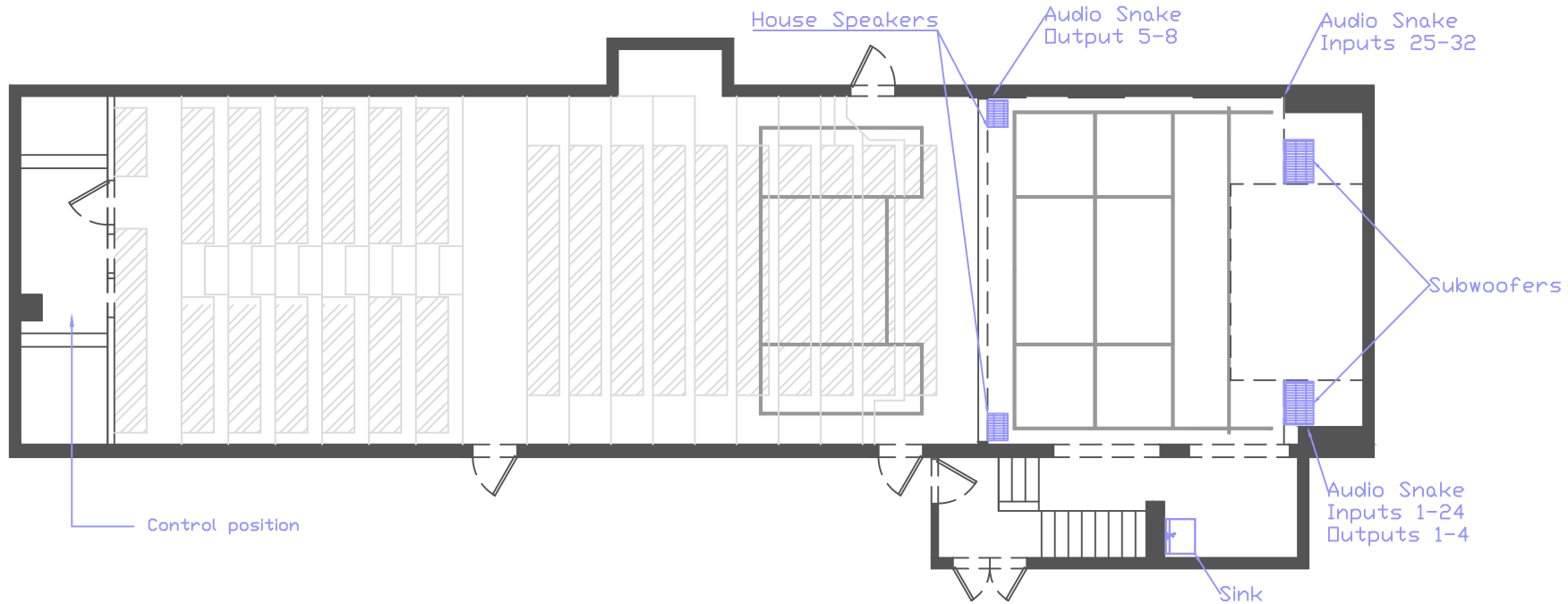
Stage Space:	21'6" wide by 19'1" deep.
Stage Space Past Column on Right Side:	5'10" wide by 3'6" deep
Stage Space Past Column on Left Side:	4' wide by 3'6" deep
Depth from front row to front of stage:	2'5"
Ceiling Height:	TBA
Circuits:	96
Floor:	Black Plywood
Loading:	Loading Entrance Available. 4'7" Wide by 6'7" High loading doors, followed by a 3' wide set of stairs with metal open railing. 3' wide by 6'11" side doors available as well.
Dressing Rooms:	2 Dressing Rooms for 4 People each. Both rooms contain make-up mirrors, clothes racks, bathrooms, and have accesses to a shower. Our dressing rooms are below the stage and accessible through a stairwell.

#### CONTROL BOOTH:

##### Lighting:

Console:	Strand Lighting LBX 96 Canal.
Optical Splitter:	1 – Chauvet Data Stream 4 (3 outputs available 3 pin or 5 pin)
Dimmers:	2 Applied Electronics SA 12/1200 12 channel 1.2 Kw per channel
Special:	1 – 16" mirror ball with 3rpm motor
House lights:	Dimmable, controlled by light switch
Touring hook-up:	Yes, extra dimmers only. Max 24/2400w
Lighting instruments:	8 – ETC source 4 jr. zoom 25/50 575w 1 – Colortron Leko 20" 1000w 2 – Colortron Leko 40" 750w and 575w (can change to 30") 8 – ETC source 4 pannel 750w 2 – Colortron 6" Fresnel 1000w

	19 – LCG1212 LEDS 144w (12 with permanent barn doors)* run with 3 pin dmx
	2 – Chauvet Intimidator spot 355Z IRC* run with 3 pin dmx
	4 – Barn Doors
	6- ETC Source four 50° 750w
	2- ETC Source four 26° 750w
	2- i Cue Mirrors 1 for FOH and 1 for LX 1 or 2
Gels:	200+ stock*
<u>Sound:</u>	
Console:	1 – Behringer x32 – 32 input 16 output 1 – Yamaha EMX 2000 1- ETC Element 2 Lighting console
Equalizers:	2 – DBX 215s dual channel 15 band EQ
PA:	4 - top. Yorkville Paraline PSA1 800w 4 - sub. Yorkville Paraline PSA1s 1200w
Amplifiers:	1 – Yorkville Audiopro 1200 250 watts per channel into 8ohms; damping factor of 600 2 - Yamaha DXR 10 4 - LTO. TX 112
Monitors:	2 – Yamaha DXR10 powered speakers 1100 watt Dynamic output 700 watt continuous output 2 – Yorkville performance series Y115 passive 200 watt 4 – Alto Truesonic TS112 passive 200 watt continuous
Playback:	1 - Denon DND 4500
Effects:	X32 Beringher Plug Ins
Microphones:	7 - Micro senheiser E835 (Dynamic Cardlod) 1 - Shure SM58 (Dynamic Cardlod) 1 – Shure SSSH (Dynamic Cardlod) 2 AKG 300B preamps with ck91 capsule (Condenser cardlod) 2- Ultralink ULM302 wireless handhelds
Mic Booms:	9 – tall booms (4 with clip) 1 – Straight boom (no clip)
Direct Box: 1	Digiflex DSPDI 2 channel passive DI
Audio Snakes:	2 – 100’ 4 channel (1 run to stage as outputs) 1 – 100’ 8 channel (run to stage as inputs) 1 – 100’ 24 input 4 output (run to stage)
CD player:	1 – Denon DJ DN-D4500MK2 dual CD player



Key

- Venue
- Audience
- Equipment
- Lighting Grid
- Masking

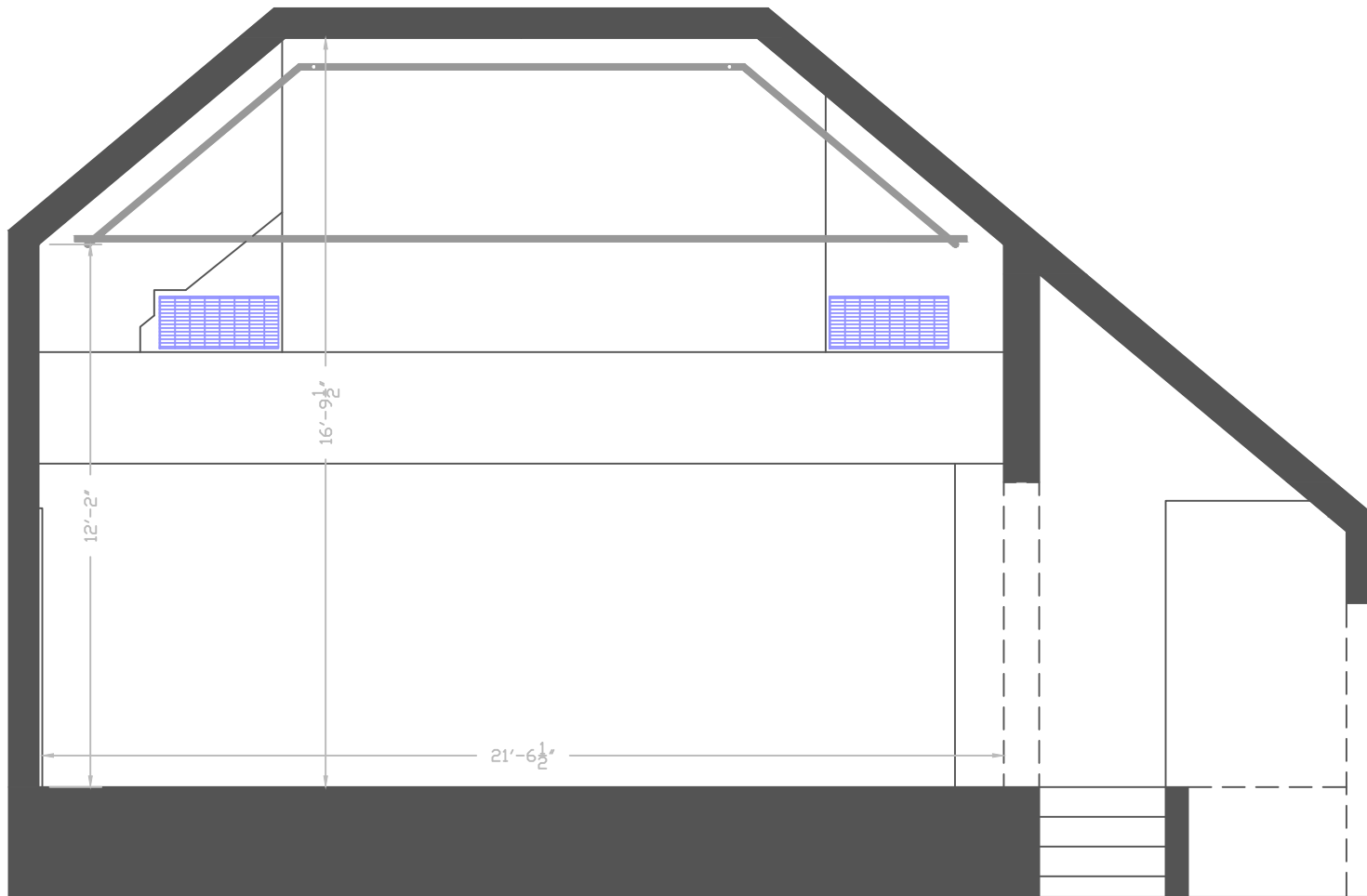
Hudson Village Theatre

Ground and Cross Section

Plan By: Robert Moody

modyrk4@gmail.com

scale  
3/32"=1'0" Page 1 of 7



Hudson Village  
Theatre

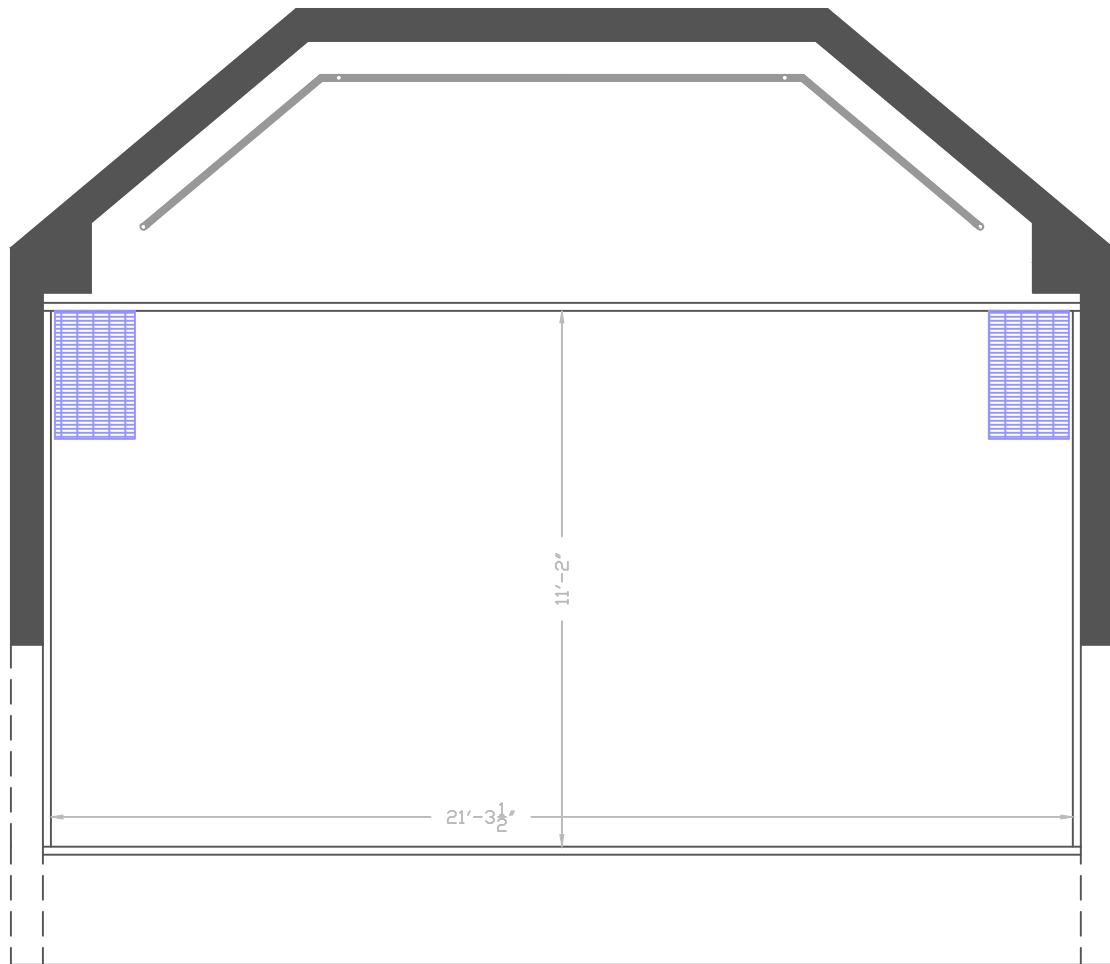
Onstage Front View

Plan By: Robert Moody

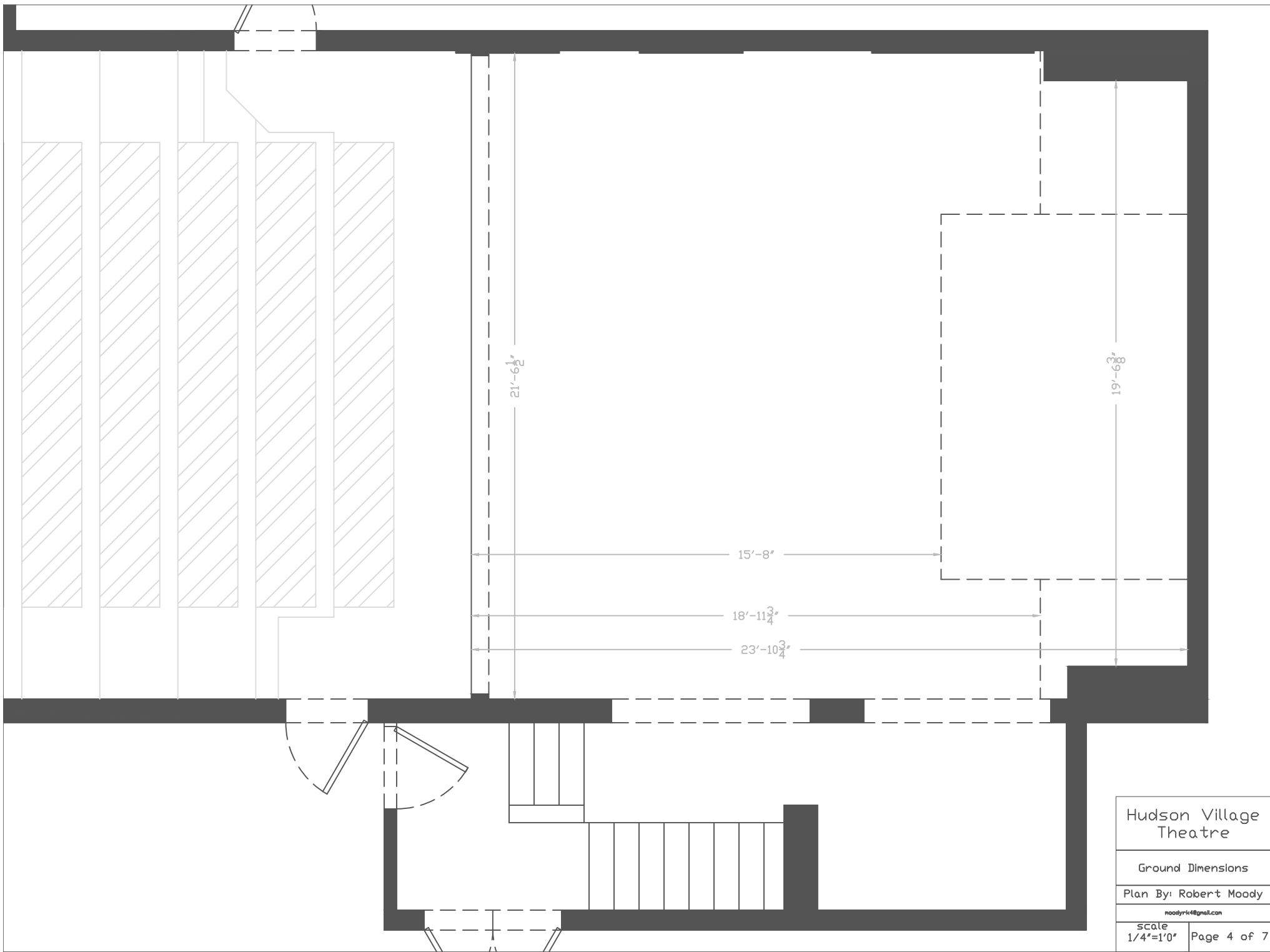
moodyrk4@gmail.com

scale  
1/4"=1'0"

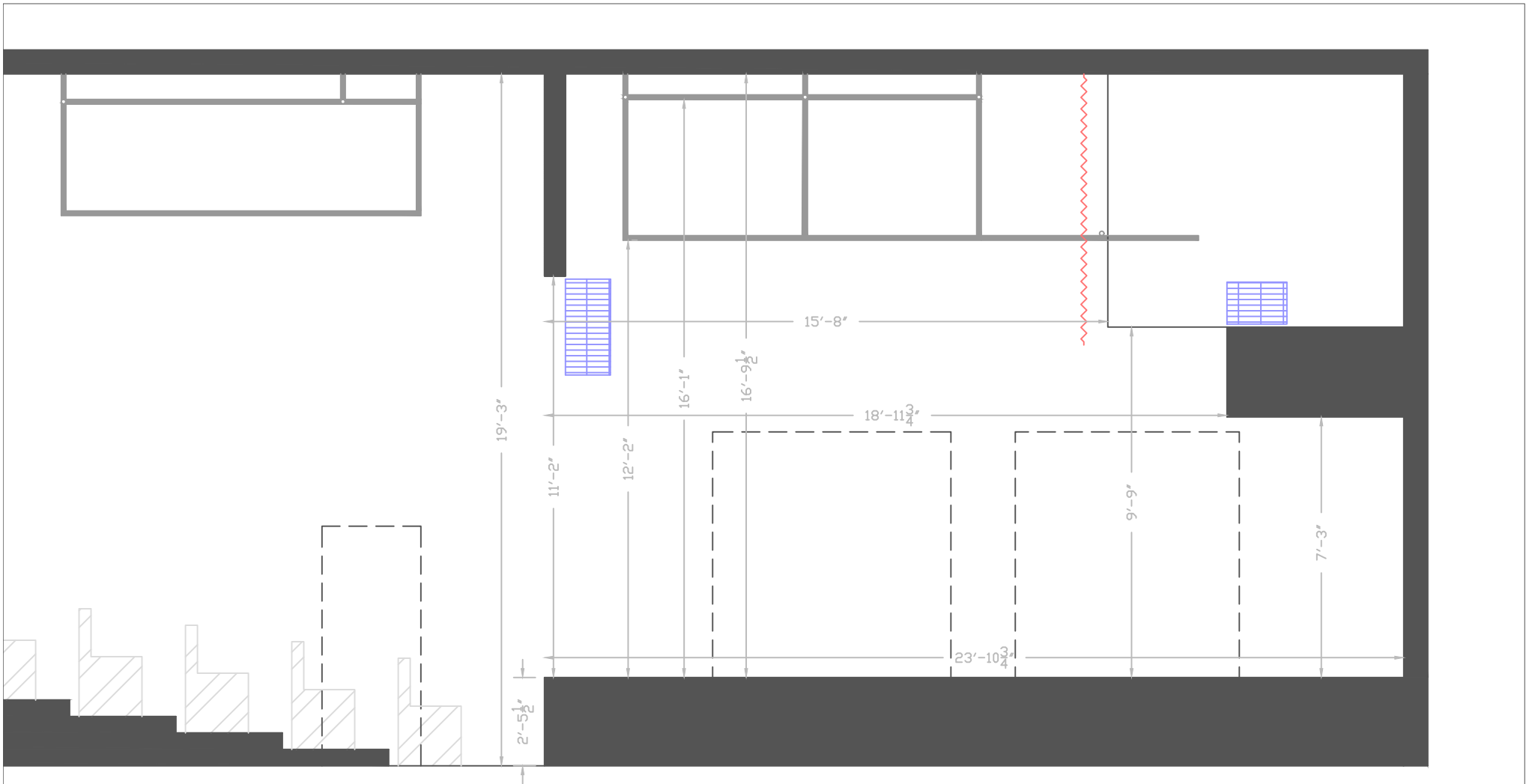
Page 2 of 7



Hudson Village Theatre	
In House Front View	
Plan By: Robert Moody	
<small>moodyrk4@gmail.com</small>	
scale 1/4"=1'0"	Page 3 of 7



Hudson Village Theatre	
Ground Dimensions	
Plan By: Robert Moody	
moodyrkv4@gmail.com	
Scale	Page 4 of 7
1/4"=1'0"	



# Hudson Village Theatre

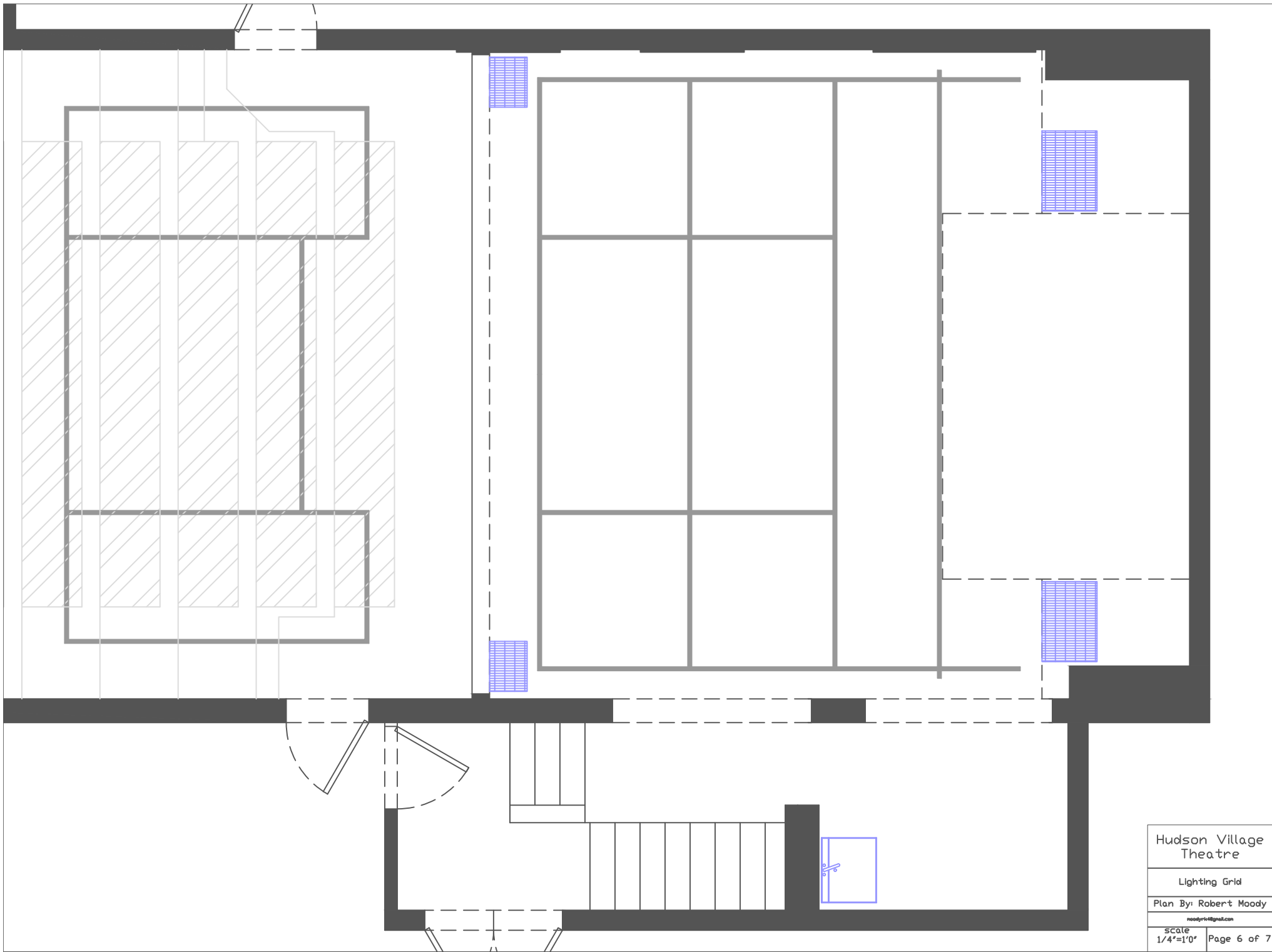
Cross Section Dimensions

Plan By: Robert Moody

moodyrk4@gmail.com

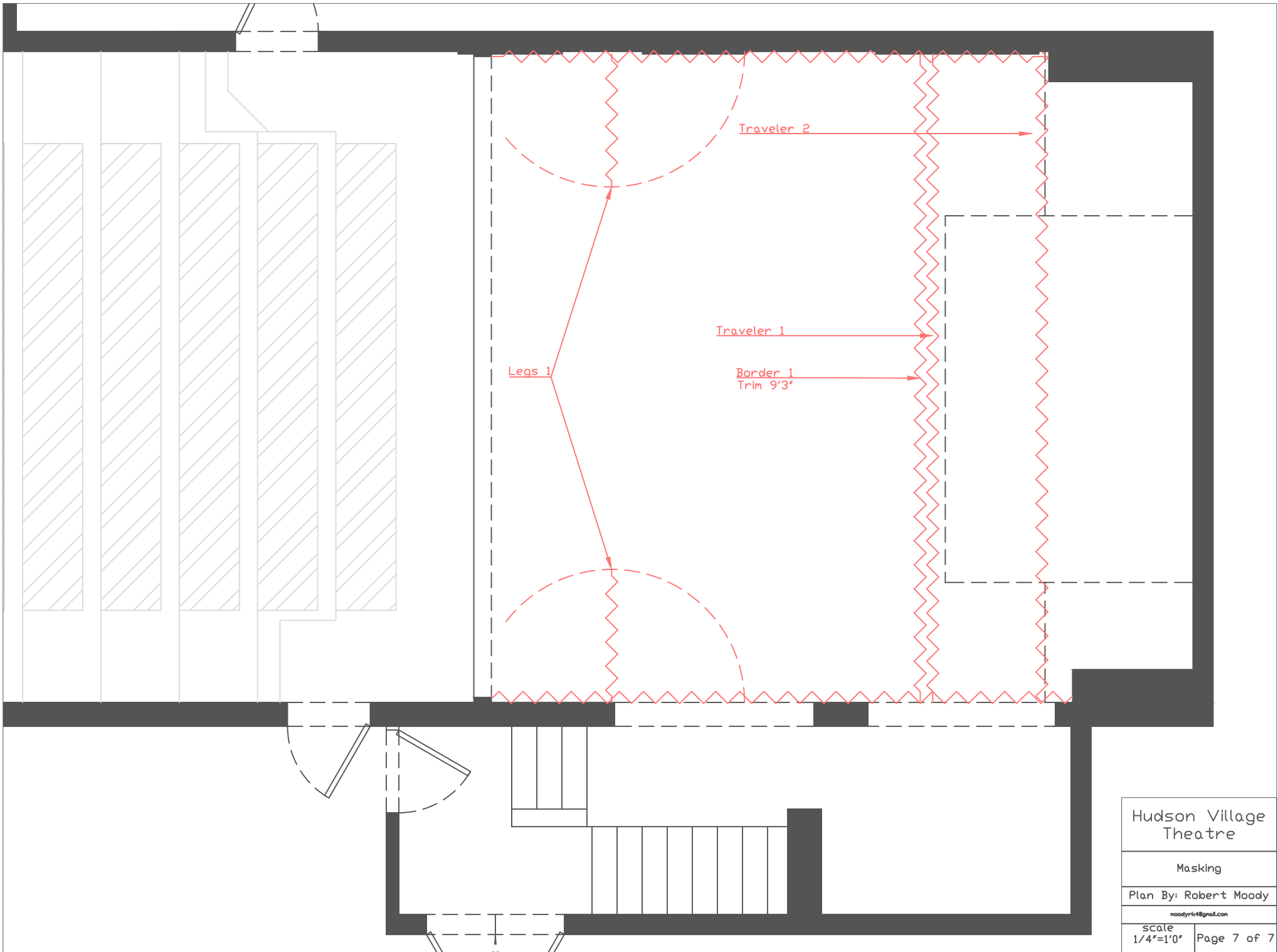
scale  
1/4"=1'0"

Page 5 of 7



Hudson Village Theatre	
Lighting Grid	
Plan By: Robert Moody	
<small>moodyrvt@gmail.com</small>	
Scale 1/4"=1'0"	Page 6 of 7





Hudson Village Theatre	
Masking	
Plan By: Robert Moody	
moodyr4@gmail.com	
Scale 1/4"=1'0"	Page 7 of 7